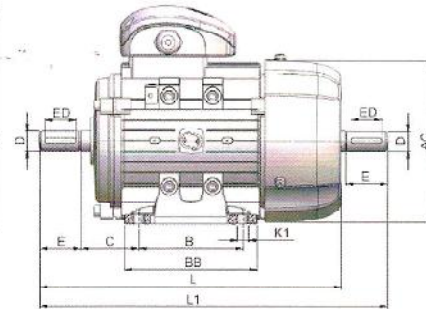
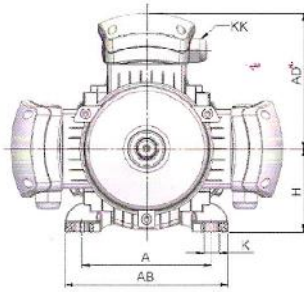
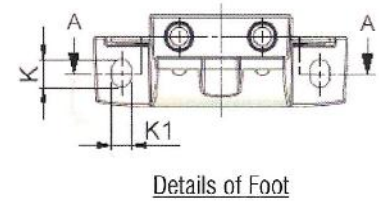
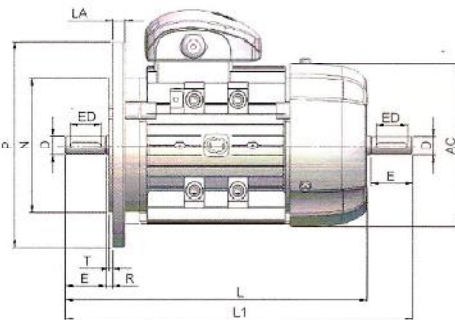
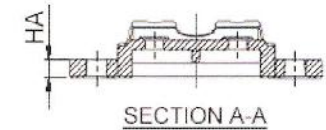


DIMENSIONS CHART: FRAMES 56 TO 355L

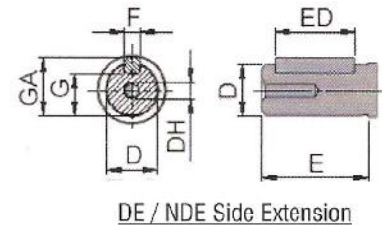
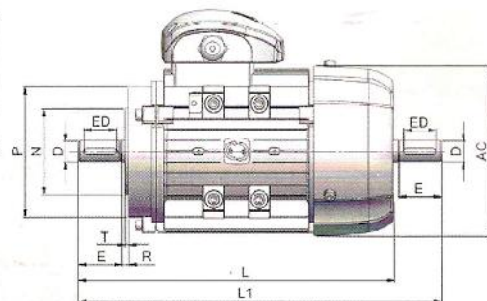
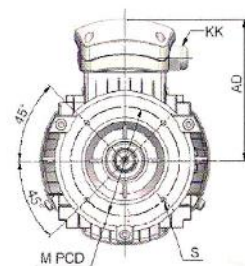
TYPE	POLE	AC	AD	H	KK	L	L1	D	DH	E	ED	F	G	GA	A	AB	B	BB	C	HA	K	K1	B3					B5					B14				
																							M	N	P	R	S	T	LA	M	N	P	R	S	T	LA	M
56	2-8	115	108	56	M16	190	223	9	M4X12	20	16	3	7.2	10.2	90	111	71	90	36	8	5.8	6	100	80	120	0	7	3	8	65	50	80	0	M5	2.5		
63	2-8	122	109	63	M20	220	240	11	M4X12	23	16	4	8.5	12.5	100	124	80	105	40	8	9.5	7	115	95	140	0	10	3	10	75	60	90	0	M5	2.5		
71	2-8	139	116	71	M20	240	281	14	M5X12	30	25	5	11	16	112	138	90	115	45	9	11	7	130	110	160	0	10	3.5	10	85	70	105	0	M6	2.5		
80	2-8	157	131	80	M20	285	322	19	M6X16	40	30	6	15.5	21.5	125	157	100	130	50	9	14	10	165	130	200	0	12	3.5	12	100	80	120	0	M6	3		
90S	2-8	176	145	90	M20	309	367	24	M8X19	50	40	8	20	27	140	173	100	130	56	11	14	10	165	130	200	0	12	3.5	12	115	95	140	0	M8	3		
90L	2-8	176	145	90	M20	334	392	24	M8X19	50	40	8	20	27	140	173	125	155	56	11	14	10	165	130	200	0	12	3.5	12	115	95	140	0	M8	3		
100L	2-8	197	169	100	M20	375	439	28	M10X22	60	50	8	24	31	160	196	140	180	63	12	16	12	180	150	250	0	15	4	13	130	110	160	0	M8	3.5		
112M	2-8	221	177	112	M32	388	454	28	M10X22	60	50	8	24	31	190	227	140	185	70	12	16	12	215	180	250	0	15	4	14	130	110	160	0	M8	3.5		
132S	2-8	260	197	132	M32	460	547	38	M12X28	80	65	10	33	41	216	260	140	185	89	15	16	12	265	230	300	0	15	4	14	165	130	200	0	M10	3.5		
132M	2-8	260	197	132	2XM40	498	585	38	M12X28	80	65	10	33	41	216	260	178	225	89	15	16	12	265	230	300	0	15	4	14	165	130	200	0	M10	3.5		
130M	2-8	315	250	160	2XM40	610	725	42	M16X36	110	90	12	37	45	254	320	210	260	108	20	15	12	300	250	350	0	19	5	14	215	180	250	0	M12	4		
160L	2-8	315	250	160	2XM40	655	770	42	M16X36	110	90	12	37	45	254	320	254	305	108	20	15	12	300	250	350	0	19	5	14	215	180	250	0	M12	4		
130M	2-8	380	280	180	2XM40	700	-	48	M16X36	110	90	14	42.5	51.5	279	355	241	260	121	24	15	12	300	250	350	0	19	5	15	-	-	-	-	-	-		
180L	2-8	380	280	180	2XM40	740	-	48	M16X36	110	90	14	42.5	51.5	279	355	279	300	121	24	15	12	300	250	350	0	19	5	15	-	-	-	-	-	-		
200L	2-8	420	305	200	2XM50	770	-	55	M20X42	110	90	16	49	59	318	395	305	370	133	24	19	12	350	300	400	0	19	5	16	-	-	-	-	-	-		
225S	4-8	470	335	225	2XM50	815	-	60	M20X42	140	110	18	53	64	356	435	266	375	149	28	19	12	400	350	450	0	19	5	22	-	-	-	-	-	-		
225M	2	470	335	225	2XM50	820	-	55	M20X42	110	90	16	49	59	356	435	311	390	149	28	19	12	400	350	450	0	19	5	22	-	-	-	-	-	-		
225M	4-8	470	335	225	2XM50	845	-	60	M20X42	140	110	18	53	64	356	435	311	390	149	28	19	12	400	350	450	0	19	5	22	-	-	-	-	-	-		
250M	2	510	370	250	2XM63	910	-	60	M20X42	140	110	18	53	64	406	490	349	440	168	32	24	12	500	450	550	0	19	5	25	-	-	-	-	-	-		
250M	4-8	510	370	250	2XM63	910	-	65	M20X42	140	110	18	58	69	406	490	349	440	168	32	24	12	500	450	550	0	19	5	25	-	-	-	-	-	-		
280S	2	580	410	280	2XM63	985	-	65	M20X42	140	110	18	58	69	457	550	368	460	190	36	24	12	500	450	550	0	19	5	28	-	-	-	-	-	-		
280S	4-8	580	410	280	2XM63	985	-	75	M20X42	140	110	20	67.5	79.5	457	550	368	460	190	36	24	12	500	450	550	0	19	5	28	-	-	-	-	-	-		
280M	2	580	410	280	2XM63	1035	-	65	M20X42	140	110	18	58	69	457	550	419	510	190	36	24	12	500	450	550	0	19	5	28	-	-	-	-	-	-		
280M	4-8	580	410	280	2XM63	1035	-	75	M20X42	140	110	20	67.5	79.5	457	550	419	510	190	36	24	12	500	450	550	0	19	5	28	-	-	-	-	-	-		
315S	2	645	530	315	2XM63	1160	-	65	M20X42	140	110	18	58	69	508	635	406	500	216	42	28	12	600	550	660	0	24	6	30	-	-	-	-	-	-		
315S	4-8	645	530	315	2XM63	1270	-	80	M20X42	170	140	22	71	85	508	635	406	500	216	42	28	12	600	550	660	0	24	6	30	-	-	-	-	-	-		
315M	2	645	530	315	2XM63	1190	-	65	M20X42	140	110	16	58	69	508	635	457	550	216	42	28	12	600	550	660	0	24	6	30	-	-	-	-	-	-		
315M	4-8	645	530	315	2XM63	1300	-	80	M20X42	170	140	22	71	85	508	635	457	550	216	42	28	12	600	550	660	0	24	6	30	-	-	-	-	-	-		
315L	2	645	530	315	2XM63	1190	-	65	M20X42	140	110	18	58	69	508	635	508	600	216	42	28	12	600	550	660	0	24	6	30	-	-	-	-	-	-		
315L	4-8	645	530	315	2XM63	1300	-	80	M20X42	170	140	22	71	85	508	635	508	600	216	42	28	12	600	550	660	0	24	6	30	-	-	-	-	-	-		
355M	2	710	655	355	2XM63	1530	-	75	M20X42	140	110	20	67.5	79.5	610	730	500	590	254	45	28	12	740	680	800	0	24	6	32	-	-	-	-	-	-		
355M	4-8	710	655	355	2XM63	1530	-	95	M20X42	170	140	25	86	100	610	730	500	590	254	45	28	12	740	680	800	0	24	6	32	-	-	-	-	-	-		
355L	2	710	655	355	2XM63	1500	-	75	M20X42	140	110	20	67.5	79.5	610	730	630	720	254	45	28	12	740	680	800	0	24	6	32	-	-	-	-	-	-		
355L	4-8	710	655	355	2XM63	1530	-	95	M20X42	170	140	25	86	100	610	730	630	720	254	45	28	12	740	680	800	0	24	6	32	-	-	-	-	-	-		



B3



B5



B14